



Reed City Area Chamber of Commerce

Your crossroads community on the path to progress



The January "Business After Five" at Kel's Closet of Reed City featured custom-made t-shirts for everyone. Judge Susan Grant left, found the t-shirt of her dreams while attending with John McDowell of McDowell Funeral Home and Marlies Manning of Manning Design Landscape Architecture. More photos on page 6.

THE MONTHLY NEWSLETTER OF THE REED CITY AREA CHAMBER OF COMMERCE

FEBRUARY 2007

THE NEW DEPOT - YOU'LL BE SO IMPRESSED ...

by Sally Bolle, Interim Executive Director, Reed City Area Chamber and DDA

At the last Downtown Development Authority meeting, the talented trio of builder Terry Gerber, architect Gary Gerber and landscape architect Marlies Manning presented an overview of the depot architectural plans and updates. Building is scheduled to begin in June 2007. The following upgrades and modifications to the original specs have added significant and impressive authenticity to the look of the structure. It is truly going to be a stunning facility.

The foundation is now designed and will go out for bids with the site work package. The design process has led to black aluminum-clad windows, reddish-brown brick with limestone-colored accents. The roof will have a light gray asphalt shingle. The decorative braces are now curving and tentatively planned to be the black accent color to match the window and doors. Stained concrete is slated for the picnic shelter and restroom wing. This area will be heated with radiant heat utilizing one of the boilers for the ice melt system.

The octagonal meeting space has earth-toned commercial carpet tile with a north arrow at the center. The meeting space will be conditioned with a geothermal heat pump system utilizing city water as a heat source. Natural ventilation can also cool the meeting space with electrically operated windows at the cupola. The insulating panels have been thickened for energy efficiency and structural efficiency. The ceiling will have a light natural wood bead-board finish.

The office area will have 6-panel wood doors, carpet tile and wood trim and a separate geothermal system. The ice melt system will keep the sidewalks

and handicapped parking space slip resistant during winter storms.

According to Gary, "the design process has been fun. We are really looking forward to construction to commence to see the building take shape. Our goal is to have a building that looks like it's been there for a long time. Even though the building will look old, it will take advantage of the latest technologies for energy efficiency and user health and safety."

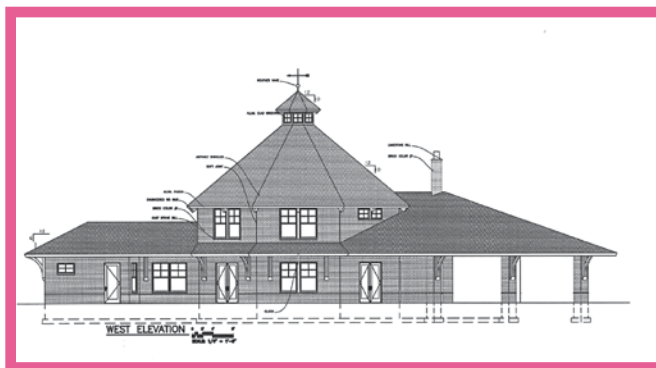
The talented Marlies Manning has been hard at work also. Exterior lighting fixtures, benches, and planters will enhance the "period" look to accentuate her landscape design. Marlies and I

are collaborating on signage design which will provide depot visitors with walking directions to the parks, downtown, museum, etc., and trail users information about other towns on the trails.

The information kiosk area (under the water tower) will have trail and walking maps donated by

Spectrum Health - Reed City Campus.

There is a lot going on in advance for this wonderful new landmark made possible by your Downtown Development Authority. The Depot will bring much-needed tourism to the downtown area and surrounding towns as well. Our trail system is a monumental asset and having the availability of the depot as a meeting room, Chamber and DDA office, and most importantly, a haven for trail users throughout the year can only be a positive for the Reed City area. We will keep you apprised as construction nears. It's very exciting!



Chamber Depot Project Personalized Paver Brick Fundraiser

You are an important part of creating and recreating the history of the depot. The depot will be surrounded with brick pavers and pathways of bricks of different sizes. The Reed City Area Chamber of Commerce is sponsoring a paver brick fundraiser which will help provide monies for the interior decor of the building.

With your purchase of a personalized brick or name plate, you can start a tradition. Etch a name, a memory of a special person and/or a personal message into history. This is your opportunity to leave an enduring memento with your own personalized brick paver. Great for gifts too!

Order forms are available to download at www.ReedCityCrossroads.com or forms will be available shortly at many locations in Reed City and the surrounding area.

Pricing is as follows:

- Silver Sponsorship (4" x 8" brick) - \$50
- Gold Sponsorship (12" x 12" paver) - \$500
- Bronze Sponsorship (Name plate) - Less than \$50

In Memorium

The Chamber offers our deepest condolences to members Terry Gerber (Gerber Construction) and Gary Gerber (Gerber Architectural) and their families on the sudden death of their father, Russ.

INSIDE

Business Spotlights:
Wright's Bake Shop
Chemical Bank
Chamber Calendar / Contacts
Chamber Events
2007 BA5 Schedule
Chamber Directory